



The Park, Cheltenham, GL50

£270,000

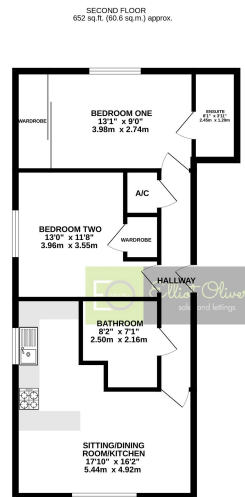
🛏️ 2 🍽️ 2 🚗 1



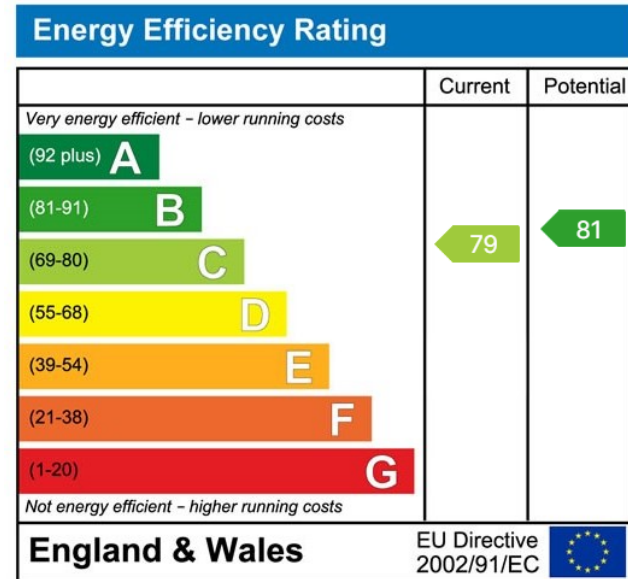
- Two double bedrooms
- Second floor flat
- Lift in building
- Open plan living room/dining area/kitchen
- Fitted wardrobes
- En-suite in main bedroom
- Communal gardens
- Allocated parking space
- Close to Town Centre and Promenade
- Council Tax Band: C



Offered to the market is this stunning two bedroom, two bathroom flat located in the popular Tivoli area with easy access to shops, restaurants and bus routes leading into the Town Centre and Promenade. It has the added benefit of communal gardens and allocated parking space at the rear of the property.



TOTAL FLOOR AREA: 652 sq.ft. (60.6 sq.m.) approx.
*All measurements are approximate and taken from the centre of the room. All dimensions are given in feet and inches. All dimensions are given in metres and centimetres. All dimensions are given in feet and inches. All dimensions are given in metres and centimetres. All dimensions are given in feet and inches. All dimensions are given in metres and centimetres.



Elliot Oliver Sales
101 Promenade, Cheltenham GL50 1NW
01242 321091
www.elliottoliver.co.uk

